

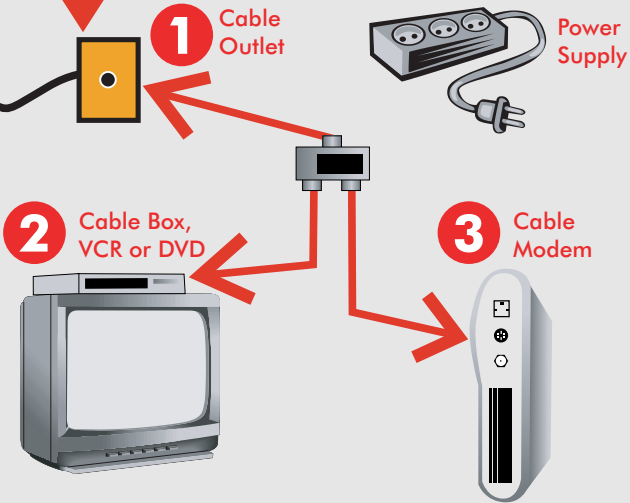
First, Connect the cable to your computer using an existing cable outlet or by creating an additional one - use the diagram and easy steps below as your guide.

These instructions and the cable wire bundle that came in the Self-install Kit make it easy to create an additional cable outlet.

- 1.) Disconnect the Existing Cable from your Wall Cable Outlet* leaving it attached at the other end to your cable box, VCR or DVD. Attach it to one splitter port on the two-port side of the splitter.
- 2.) Connect the Short (3') Cable between the Wall Cable Outlet and the single-port side splitter.
- 3.) Connect the long (25') Cable between the open Splitter Port and the Cable connection on the Cable Modem.

Step One

Preparing the Cable Modem Outlet

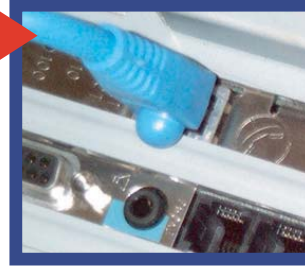


Step Two

Before connecting an external cable modem, you need to choose your connection method. You have two options: Ethernet or USB.

Ethernet

If you don't have a USB port, you'll need to install an ethernet Network Interface Card (NIC). If you're not familiar with how to install a card inside your computer, please refer to the instructions that came with the NIC. Once the NIC is installed, the computer will have an ethernet port where you'll connect the ethernet cable.



USB

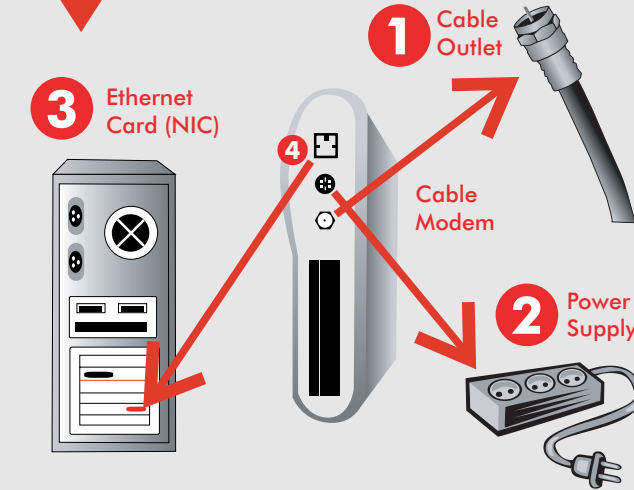
(Universal Serial Bus)

If your computer has a small, rectangle port, you have the option of using a USB connection. The USB port is usually found on the back of the computer. In some cases it could be on the front of the computer or the back of the keyboard. Note: Using a USB connection does not require opening your computer's case.

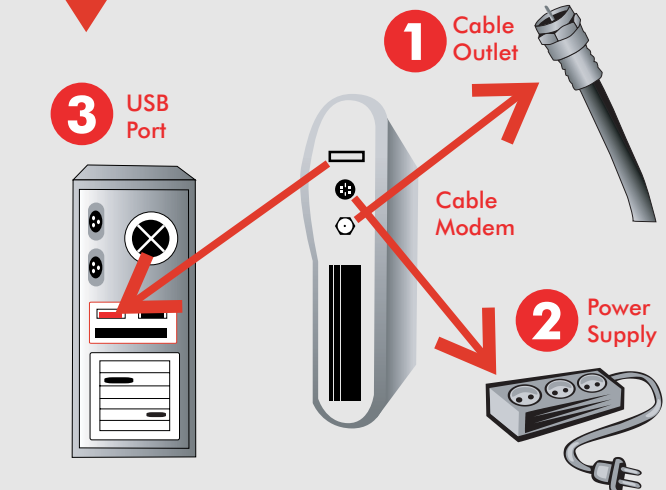


Option One

Installing the Cable Modem



Option Two



> Proceed to Step Two

- 1.) Connect dedicated Cable to the Cable Modem to the Cable Connector.
- 2.) Plug modem into a surge protector.
- 3.) Plug Ethernet cable to Ethernet Port on your Computer.
- 4.) Plug Ethernet cable to Ethernet Jack on the Modem

- 1.) Connect dedicated Cable to the Cable Modem to the Cable Connector.
- 2.) Plug modem into a surge protector.
- 3.) Connect USB cable to the Cable Modem and to the USB Port on your computer. Your computer should detect new device.